

TECHNICAL RIDER « Aucun lieu »

V2 Update November 17, 2013

Welcome :

We need a heated room and peaceful for the preparation of the dancer (Azzusa) on the day of the show.

A light catering in the lodges will be highly appreciated (water, natural juice, fruits, coffee, tea...).

The stage:

Black background and Italian curtains style.

Height under pole **6m minimum**.

Pole length **10m minimum**.

Stage size **10m x 10m minimum**.

The floor will be covered with a black dance mat.

Thank you to anticipate problems with lights on emergency exits blocks.

We provide two tulle (1 white and 1 black) 5,8m x 9,5m everyone. Also a white video screen 5,5m x 9,5m. To see depending on the transportation.

Schedule:

Day	Schedule	Activity	Staff to provide	Observations
D - 1	9h00 -13h00	Unloading. Tulles, lights et video installation	2 stage technicians 2 light technicians 1 Sound/video technician	
D - 1	13h00 -14h00	Meal		
D - 1	14h00 -16h00	Vidéo settings	1 Sound/video technician	
D - 1	16h00 -18h00	Sound installation and lights settings	2 stage technicians 2 light technicians	
D - 1	18h00 -19h00	Sound installation	1 Sound/video technician	
D - 1	19h00 -20h00	Meal		
D - 1	20h00 -22h00	Sound settings		
D	10h00 -12h00	Sound check	1 Sound/video technician	
D	11h00 -13h00	Lights and stage finishing	1 stage technician 1 light technician	
D	13h00 -14h00	Meal		
D	14h00 -16h00	Repetitions	1 stage technician 1 light technician 1 Sound/video technician	
D	16h00 -18h00	Finishing	1 stage technician	
D	18h00 -19h00	Cleaning	1 stage technician	
D	19h00 -20h00	Meal		
D	20h20 -20h30	Opening doors		
D	20h30 -21h30	Show	1 stage technician 1 light technician 1 Sound/video technician	50 minutes
D	22h00 -00h00	Dismantling, loading	4 technicians	

Technical contacts:

Technical manager and sound: Carlos DUARTE

0033(0)6.16.45.75.10

duarte.carlos48@gmail.fr

Lights and scenography : Nicolas VILLENAVE

0033(0)6.86.92.44.13

villenave.nicolas@wanadoo.fr

TECHNICAL RIDER « Aucun lieu »

Equipment supply

Lights: (layout inclosed)

Height under pole: 6m.

43 of 2kW dimmers DMX512 minimum.

4 identicals 1kw 614 Robert Juliat on ground plate.

1 F1 on ground plate.

12 PAR64 1Kw CP61.

15 identicals 1kw cycliodes.

2 identicals 1kw PC on a 3m height stand.

1 Martin Atomic 3000 stroboscope on ground plate.

We provide 20 Specific fixtures floor standing (IDE500).

We provide the light desk (Mac).

We provide 2 tulle, 1 video screen, to see depending on the transportation.

Video:

One 3500 lumens DLP video projector minimum, with **0,8 wide angle** who can cover the entire bottom white screen, with a **DMX** video shutter placed at the front of the stage behind the black tulle. VGA input.

One 5000 lumens DLP video projector minimum, with a **lens that can cover the entire black tulle to the face**, with a **DMX** video shutter placed in the hall. VGA input.

Video wires from control place to the both video projectors (stage et hall).

The both video projectors must have the same resolution 1024x768 and have natively 4/3 imperatively.

Sound:

Sound system

4 identicals 15 inch loud speakers like NEXO PS15, L.ACOUSTICS MTD115... On the L/R, and omni 1/2 outputs.

2 identicals 18 inch SUB (No ML18 Amadeus etc...) like Martin Audio W8 218X or equivalent on the Omni 3/4 outputs.

The speakers at the front will be suspended at an ideal height. The speakers at the background will be on a stand at 2m height.

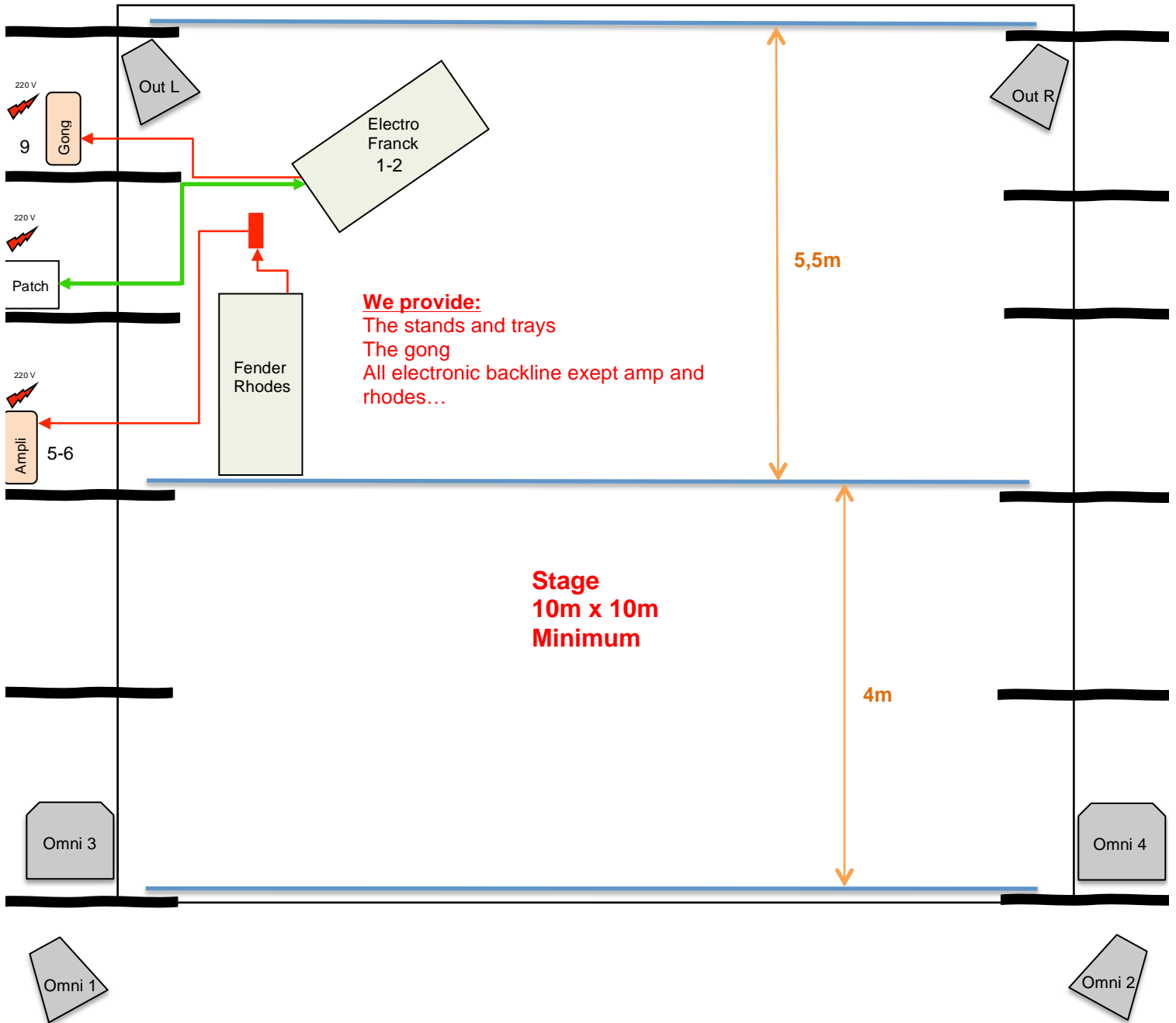
Mixing

1 mixing desk Yamaha 01V96 Minimum...

1 driver with : **1 UHF 4066 DPA, 1 professional CD player.**

We provide 1 Lake LM44, 1 Yamaha card MY8-AE.

TECHNICAL RIDER « Aucun lieu »



We provide:
The stands and trays
The gong
All electronic backline exsept amp and rhodes...

**Stage
10m x 10m
Minimum**

Audience

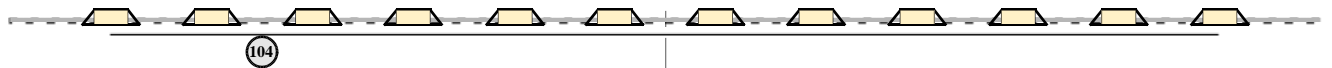
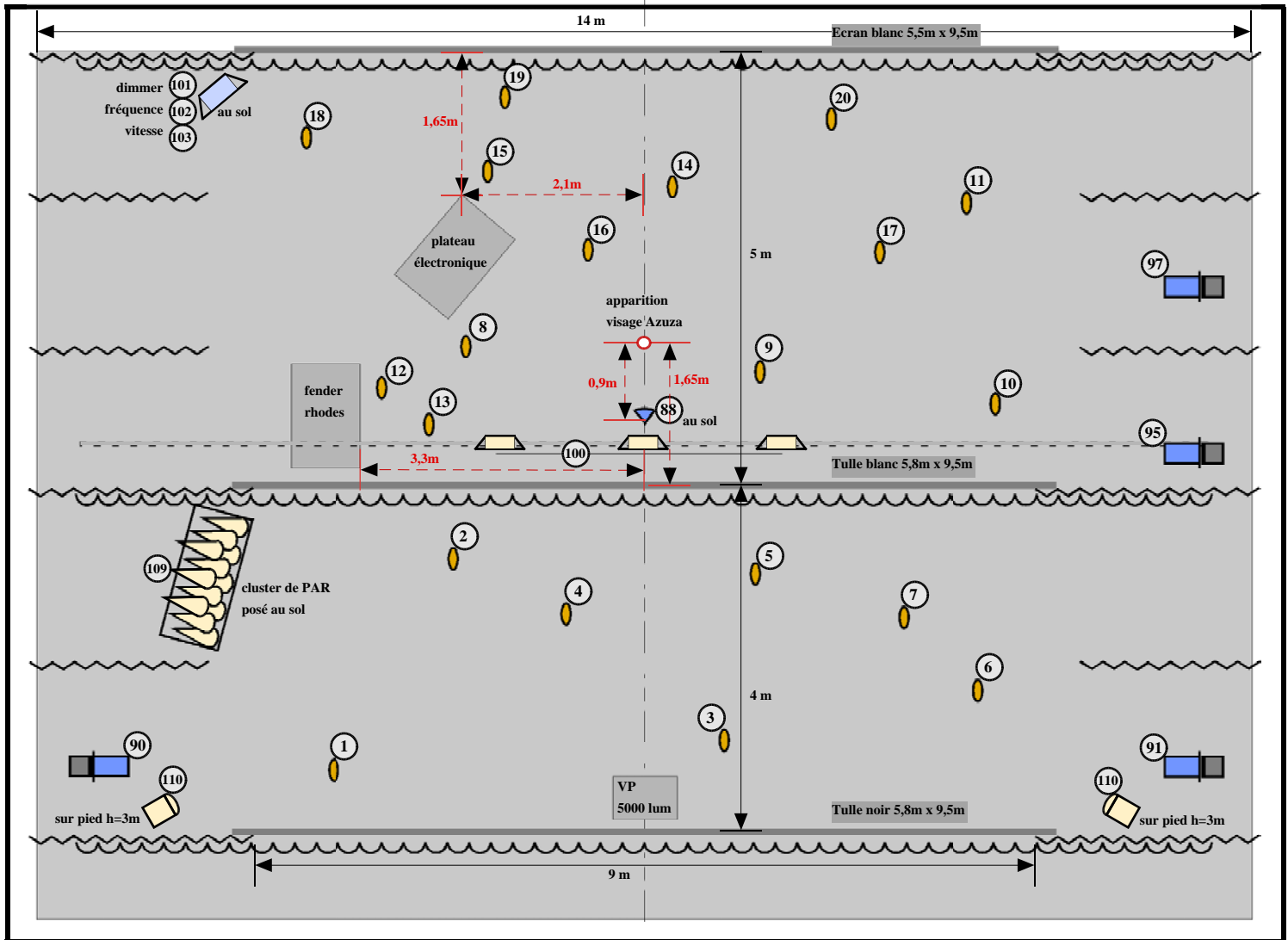
TECHNICAL RIDER « Aucun lieu »

Input patch

N°	Source	Mic/DI	Insert	Observations
1	Electro L	XLR		
2	Electro R	XLR		
3				
4				
5	Amp Rhodes	RE 20		Small stand mic
6	Amp Rhodes	E 906		
7	UHF Azzuza	DPA 4066		At control place
8				
9	Gong	KM 184		Small stand mic
10				
11				
12				
13	CD L			
14	CD R			
15	Mac L			
16	Mac R			

Output patch

Source	Speaker	Insert in/out
Mix L	Back L	Lake 1/1
Mix R	Back R	Lake 2/2
Omni 1	FOH L	Lake 1/3
Omni 2	FOH R	Lake 2/4
Omni 3	SUB L	Lake 1/5
Omni 4	SUB R	Lake 2/6
Monitor out L	Vidéo	
Monitor out R	Vidéo	
Rec out L	REC	
Rec out R	REC	



- 105 salle
- 118 électro-aimants tulle blanc
- 119 shutter VP salle
- 120 shutter VP sol

Bilan sol :

- 30 circuits 3kW
- 2 PC 1kW
- 4 découpes moyennes 1kW identiques
- 12 PAR64 lampe CP61
- 1 projecteur BT F1
- 1 stroboscope atomic 3000
- 20 lampes IDE500
- 2 pieds h = 3m
- 6 platines de sol
- (les lampes IDE500 sont fournies par la cie)

Bilan cintre :

- 4 circuits 3kW
- 15 Cycliodes 1kW identiques

légende

- PC 1kW (2 unités)
- cyciodes 1kW (15 unités)
- découpe au sol 1kW (4 unités)
- PAR64 lampe CP61 (12 unités)
- projecteur BT F1 (1 unité)
- stroboscope Atomic 3000 (1 unité)
- lampe IDE 500 au sol (20 unités)
- pendrillon
- frise

Filtres utilisés:

réf Lee Filters
L711

réf Rosco
#119
#114
#132

"Aucun Lieu"

Cie d'Autres Cordes

**implantation lumière
plan de tournée**

lieu :
date :

éclairagiste : Nicolas Villenave
tél : 06.86.92.44.13

échelle : 1 m